

Save the Dates!

May 25-26, 2010



Promoting Social Emotional Competence in California's Young Children

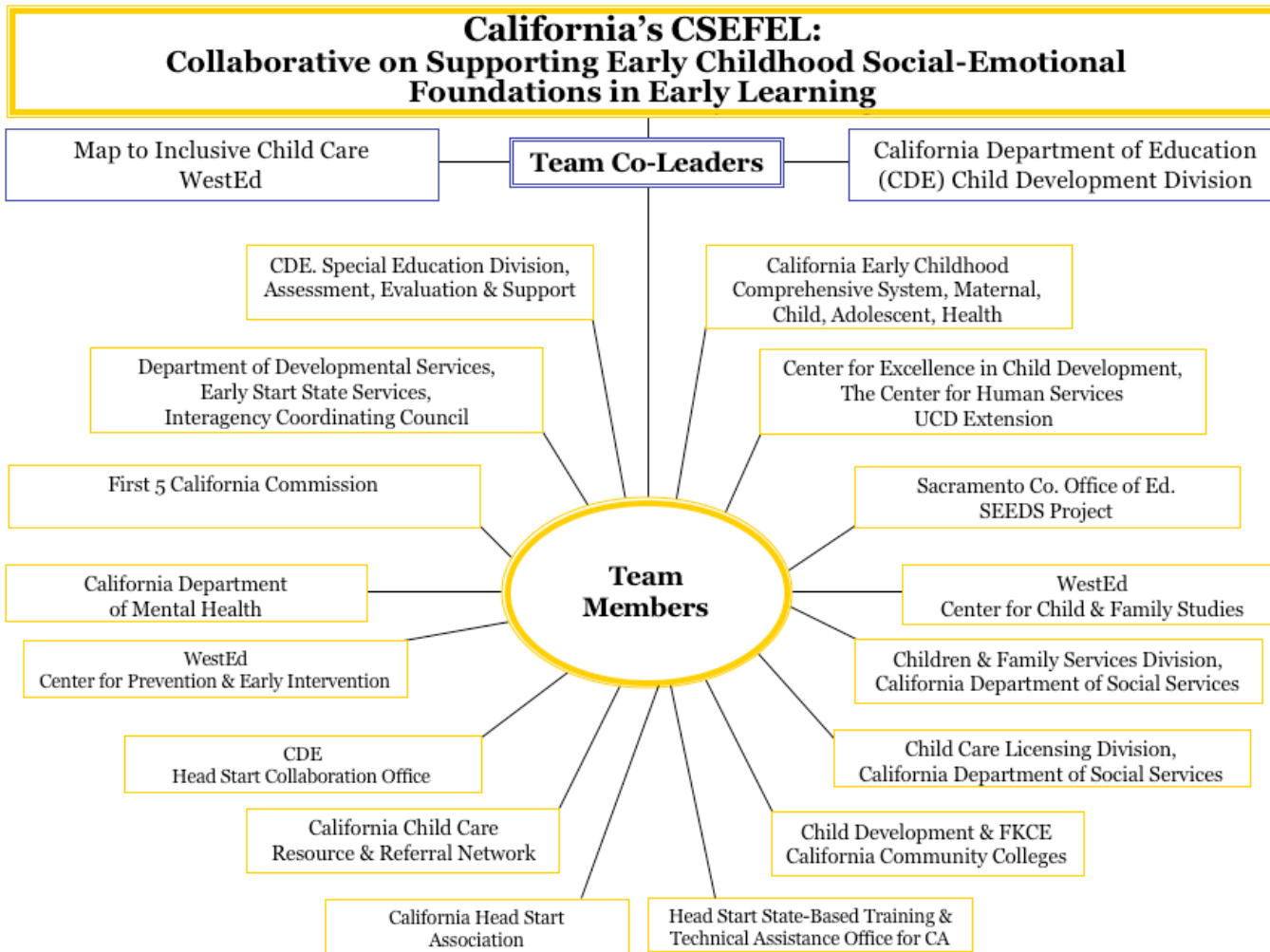
CSEFEL Faculty Seminar **Just for Early Childhood Education Faculty Members!**

A two-day seminar focused on how to incorporate information from the Center on the Social and Emotional Foundations for Early Learning (CSEFEL) into existing ECE coursework. This special event will provide ECE faculty members from two- and four-year institutions of higher education with materials, sample syllabi, resources, strategies, and practices that will enable sharing of the evidence-based CSEFEL Pyramid Model Framework with students.

The May 25-26, 2010 Seminar will be held in Southern California
A Northern California Seminar will be scheduled in 2011.

Online Applications will be available for this Seminar February 1, 2010

<http://www.cainclusivechildcare.org/camap/csefel.html>



This event is supported by the National Center on the Social and Emotional Foundations for Early Learning (CSEFEL). CSEFEL is working with the California Collaborative (multi-agency membership), the California Department of Education Child Development Division, and WestEd in this initiative.

For more information about CSEFEL and the CA/CSEFEL partnership, go to <http://www.cainclusivechildcare.org/camap/csefel.html>

If you have questions about CA CSEFEL, please contact map@wested.org